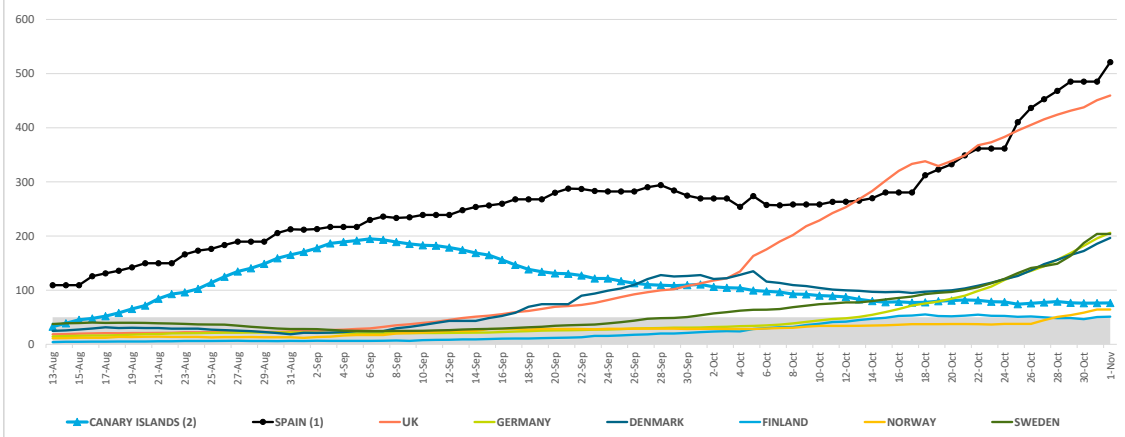
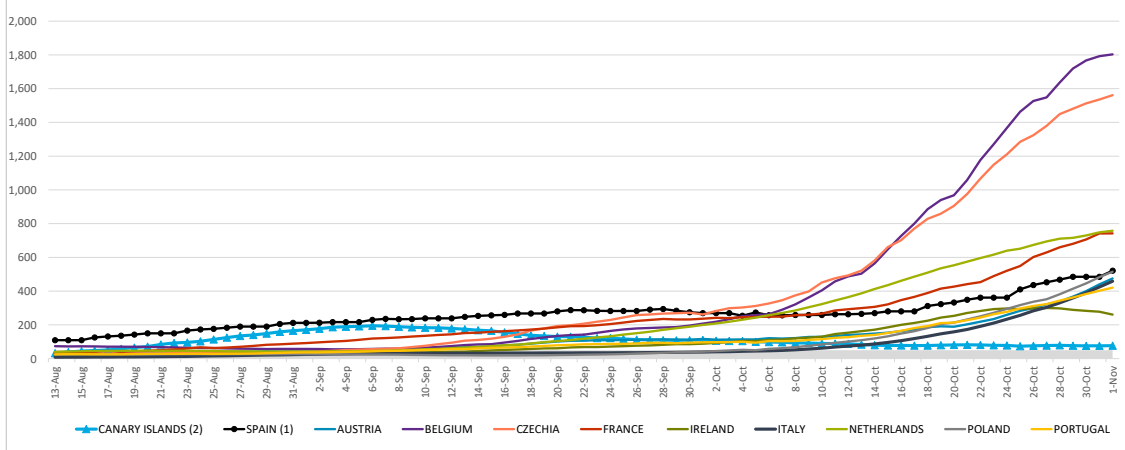


14-day cumulative number of COVID-19 cases per 100 000																			
	CANARY ISLANDS (1)	CANARY ISLANDS (2)	SPAIN (1)	SPAIN (2)	UK	GERMANY	DENMARK	FINLAND	NORWAY	SWEDEN	AUSTRIA	BELGIUM	CZECHIA	FRANCE	IRELAND	ITALY	NETHERLANDS	POLAND	PORTUGAL
3-Oct	110.0	104.6	269.5	319.3	121.9	32.4	122.0	24.4	28.2	59.4	112.9	233.5	298.5	240.2	97.7	41.4	218.9	48.6	98.4
4-Oct	103.7	103.8	254.0	319.3	134.5	33.5	128.4	24.0	28.2	62.1	113.7	251.1	303.3	245.4	104.6	43.4	230.9	52.2	99.5
5-Oct	99.2	99.5	273.7	302.4	163.1	34.1	134.9	28.2	28.2	63.9	113.6	258.2	311.8	246.8	104.0	45.0	243.4	49.8	94.1
6-Oct	97.2	97.8	257.5	305.0	175.5	35.1	116.0	30.0	29.3	64.1	121.2	263.2	326.8	248.0	110.7	46.5	257.0	58.2	104.0
7-Oct	95.9	96.5	256.8	303.3	189.9	36.3	113.3	31.4	30.1	65.2	119.0	289.8	346.1	248.7	112.8	48.7	270.2	62.2	103.6
8-Oct	92.6	92.8	258.4	307.0	201.9	38.6	109.4	31.9	30.6	68.6	122.2	321.3	374.6	257.2	120.5	52.0	285.4	67.5	105.0
9-Oct	92.6	92.3	258.4	308.1	218.2	41.5	107.5	35.6	32.6	71.3	128.2	362.4	398.0	260.2	124.2	56.5	304.3	75.8	110.7
10-Oct	92.6	90.1	258.4	308.1	228.7	44.1	104.1	38.0	34.1	74.2	129.4	404.2	451.2	267.0	130.3	62.2	322.8	84.1	115.5
11-Oct	88.5	89.2	263.1	308.1	242.4	46.6	101.1	41.2	34.1	75.7	132.6	458.0	476.2	285.7	145.9	68.6	344.6	93.9	122.9
12-Oct	87.3	87.5	263.4	299.8	253.2	48.2	99.6	42.0	34.1	77.5	141.3	487.3	493.1	293.1	153.7	74.7	364.2	101.4	127.1
13-Oct	82.8	83.2	265.2	293.8	268.1	50.6	98.8	44.9	34.3	77.4	143.4	503.6	521.5	299.7	162.6	79.9	387.0	109.5	135.1
14-Oct	79.9	80.0	270.0	295.9	283.2	54.6	97.1	47.2	34.7	79.9	148.5	564.2	581.3	307.1	171.7	86.9	412.2	119.4	140.2
15-Oct	77.4	77.9	280.4	304.2	302.2	59.6	96.4	49.1	35.2	82.9	153.7	647.8	660.8	321.6	185.3	96.0	435.2	132.3	152.3
16-Oct	77.4	78.5	280.4	312.4	320.3	65.2	96.9	52.4	36.1	85.6	163.1	726.8	701.9	346.5	200.5	106.4	461.4	148.6	164.4
17-Oct	77.4	77.1	280.4	312.4	333.3	71.6	94.9	53.1	37.3	88.3	172.3	800.1	770.5	365.8	211.3	118.8	485.5	162.8	181.2
18-Oct	77.2	77.5	312.2	312.4	338.2	75.6	97.1	55.3	37.3	92.8	186.0	885.2	828.4	388.8	224.5	132.2	509.5	181.9	192.7
19-Oct	79.4	79.7	322.9	343.1	329.2	79.1	98.4	52.3	37.3	95.1	191.2	940.0	858.6	414.6	243.3	147.3	535.1	204.4	210.8
20-Oct	81.1	80.8	332.7	347.1	338.6	84.2	99.7	51.7	37.5	96.8	188.8	968.4	905.1	426.8	253.7	159.0	553.4	213.8	213.8
21-Oct	82.8	82.1	349.0	360.9	348.7	90.0	103.2	52.9	37.5	100.6	203.0	1,058.4	975.8	441.7	270.8	172.6	574.4	232.3	227.9
22-Oct	81.4	81.4	361.7	379.1	367.5	98.7	108.4	54.8	37.3	105.6	218.8	1,176.8	1,066.3	453.5	282.2	191.7	596.1	250.9	243.4
23-Oct	81.4	78.8	361.7	394.2	373.1	106.8	113.8	52.7	36.6	112.8	234.1	1,269.9	1,148.5	488.6	293.4	210.9	616.1	271.5	262.8
24-Oct	81.4	78.4	361.7	394.2	383.1	118.8	120.3	52.4	37.7	120.9	259.6	1,366.7	1,210.8	520.9	296.8	233.8	639.4	294.9	277.4
25-Oct	77.4	74.1	410.2	394.2	394.9	128.1	126.2	50.8	37.7	131.6	283.2	1,463.3	1,284.4	548.6	293.5	256.8	651.8	316.8	297.1
26-Oct	76.1	75.7	436.5	446.0	405.2	135.6	136.6	51.6	37.7	141.0	299.7	1,526.5	1,323.8	602.2	297.7	283.0	674.0	336.7	311.6
27-Oct	77.1	77.3	452.6	470.1	415.6	144.3	148.1	50.0	44.7	144.5	321.2	1,548.2	1,379.8	629.4	300.1	303.5	694.1	352.1	323.3
28-Oct	78.6	79.0	468.2	486.7	424.1	156.2	156.0	48.3	50.7	148.7	338.5	1,636.1	1,448.7	659.9	297.9	330.2	711.0	381.7	343.6
29-Oct	76.7	76.8	485.3	508.6	431.6	168.4	165.0	48.5	53.9	163.4	367.2	1,719.2	1,481.0	680.6	289.4	359.5	715.7	414.1	362.0
30-Oct	76.7	76.0	485.3	530.7	437.7	182.1	172.4	46.6	58.4	187.1	400.0	1,766.8	1,512.3	706.0	282.8	389.3	730.0	445.9	382.6
31-Oct	76.7	76.3	485.3	530.7	450.9	195.6	185.7	50.3	64.3	203.9	440.1	1,792.5	1,535.8	742.0	278.0	424.2	748.1	482.5	402.6
1-Nov	76.4	76.5	521.1	530.7	459.5	205.9	196.5	51.1	64.3	203.9	475.1	1,803.3	1,561.3	742.3	260.6	458.7	757.8	514.8	420.6
2-Nov	73.3	72.9	527.9	567.2	468.9	215.3	205.1	52.0	64.3	203.9	514.2	1,778.0	1,575.2	771.3	245.5	488.9	759.2	537.6	432.3

Main source markets: 14-day cumulative number of COVID-19 cases per 100 000



Others: 14-day cumulative number of COVID-19 cases per 100 000



Sources: European Centre for Disease Prevention and Control, Ministerio de Sanidad, Gobierno de Canarias (Servicio Canario de Salud)
 (1) Source: Ministerio de Sanidad (daily report)
 (2) Source: Gobierno de Canarias (Servicio Canario de Salud)
 (3) Source: European Centre for Disease Prevention and Control